



# Four ways to discover Ohio State

Explore campus and Columbus  
from the perspective that  
interests you most.

Academic explorer

History and art buff

Foodie

Sports enthusiast

## Visit tips

- Before you leave home
- While you're here

# 1. Academic explorer



**The William Oxley Thompson Memorial Library**, Ohio State's main library, hosts thousands of students daily. Thompson Library is home to 1.25 million volumes of books, 230 computers, 1,800 study seats and the Berry Café. Be sure to check out the Campus Reading Room on the top floor to see spectacular views of campus and downtown Columbus.  
[library.osu.edu](http://library.osu.edu)

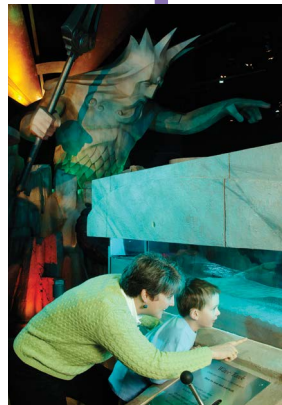


**The Columbus Zoo and Aquarium**, named the #1 Zoo in America by *USA Travel Guide*, fosters a greater appreciation of wildlife and conservation issues amongst its visitors. Just 30 minutes north of campus, the zoo offers discounted admission to Ohio State students. [columbuszoo.org](http://columbuszoo.org)



**Orton Hall** — named for Ohio State's first president, Edward Orton — was built in 1893 using 40 types of Ohio stone laid in stratigraphic order to mirror Ohio's bedrock. Orton is home to the Orton Geological Museum and the Orton Library of Geology. [ortongeologicalmuseum.osu.edu](http://ortongeologicalmuseum.osu.edu)

Orton Hall houses the bell tower chimes — 14 bells weighing more than 25,000 pounds that mark the hour and quarter hour. Listen at noon to hear “Carmen Ohio.”



**COSI** (Center of Science and Industry), located in downtown Columbus, was recently named the #1 Science Center in the country by *Parents* magazine. Since opening in 1964, COSI has provided an exciting and informative atmosphere for people of all ages to discover more about our accomplishments, our environment, our heritage and ourselves. [cosi.org](http://cosi.org)



**Biological Sciences Greenhouses**, located atop the 12th Avenue Garage, feature 15,120 square feet of glass greenhouses divided into 24 computer-controlled environments used for research and teaching. The facility also houses a unique insectary. Reservations are required: call 614-688-5593.

**The John Glenn College of Public Affairs** exhibit space, located in Page Hall, offers a historical overview of Senator Glenn's life — as an astronaut, senator and family man — in pictures and mementos. The collection also includes a moon rock. Glenn piloted NASA's Friendship 7, the first American manned orbital mission, in 1962. [glenn.osu.edu](http://glenn.osu.edu)

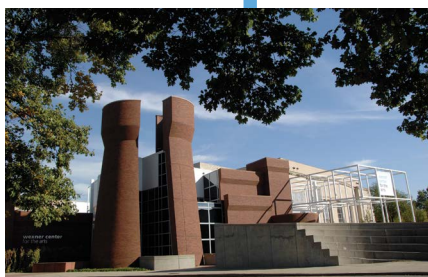
## 2. History and art buff

**Hopkins Hall Gallery** is a central part of life in the College of Arts and Sciences. Week-long student art exhibitions occur throughout the year, particularly during spring and summer terms when the majority of students are completing their degree programs. [art.osu.edu](http://art.osu.edu)

Gateway Film Center at the **Gateway** on south campus shows blockbusters, indies, docs and locally-grown films, plus hosts a film festival and weekly trivia night. What's up now: [gatewayfilmcenter.org](http://gatewayfilmcenter.org).



**Knowlton Hall** is a state-of-the-art facility for the School of Architecture. This modern building features gallery space for exhibitions, a central review space, two computer labs, a roof garden, a digital image library and a café. [knowlton.osu.edu](http://knowlton.osu.edu)



**Wexner Center for the Arts** is your campus destination for exhibitions, performances and film. While you're there, check out the Wex's unique store and café. Obtain a one-day pass for the Wexner Center galleries when you check in for your visit. [wexarts.org](http://wexarts.org)

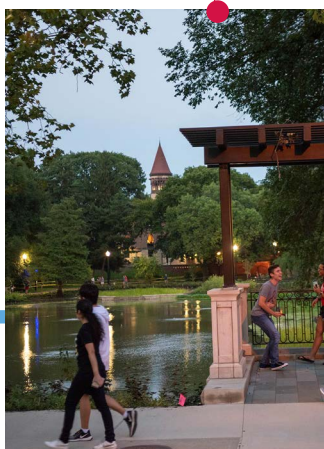
**Urban Arts Space**, located in downtown Columbus, is 10,000 square feet of exhibition space, non-traditional performance and installation space, and conference and office space. A partnership between the Urban Arts Space and faculty from the arts and humanities allows the space to carry out its mission of teaching, experimentation and community engagement. [uas.osu.edu](http://uas.osu.edu)

Read more about Ohio State history and traditions on the **From Woody's Couch** blog.



**The Short North Arts District** is home to dozens of galleries and exhibit spaces. Less than a mile south of campus, the district plays host to Gallery Hop on the first Saturday of every month. Thousands of visitors converge on the strip to see new exhibits and to celebrate art. [shortnorth.org](http://shortnorth.org)

**Mirror Lake**, originally fed by a natural spring, figured prominently in the selection of a site for the university. Mirror Lake Hollow includes Browning Amphitheatre, Bucket and Dipper Rock, the **Faculty Club** and **Pomerene Hall** — all campus landmarks in their own right.



### 3. Foodie



**The MarketPlace at Neil**, located in the Neil Building, is a favorite campus dining destination for students. MarketPlace serves up plenty of variety, from fresh wraps and hot panini to wood-fired pizzas and stir fry.

Visit [dining.osu.edu](http://dining.osu.edu) for a list of dining locations across campus.



**Mirror Lake Eatery**, located in Pomerene Hall, features three flavors of chicken tenders and 10 varieties of dipping sauce. The Mirror Lake fries are a student favorite. Shakes, too!



**The Gateway**, located on High Street between Chittenden and Ninth Avenues, features great eateries frequented by Ohio State students. Although not part of the campus dining plan, students spend their extra cash at spots like Trism, Elia Athenian Grill, Five Guys, Mark Pi's, Cane's, First Watch and Panera Bread.

[gatewayfilmcenter.org.com](http://gatewayfilmcenter.org.com)



**Ohio Union** offers multiple unique dining experiences. The *Union Market* comprises four stations: eat a grilled favorite at *Fired Up*, enjoy a locally-grown salad at *Across the Field*, make a fresh sandwich at *Dough-IO* or try some international cuisine at *Buckeye Passports*. Also in the Union you'll find a 1950s-inspired diner called *Sloopy's* that features diner-style classics and breakfast favorites.



The **North Market** is a popular public market started in 1876 that features the food of locally grown businesses like Flavors of India, Hot Chicken Takeover, Hubert's Polish Kitchen, Jeni's Splendid Ice Creams, Nida's Sushi, Sarefino's Pizzeria, Little Eater and Momo Ghar. Located three miles south of campus, the market is a short ride on the #2 COTA bus that runs along High Street. [northmarket.com](http://northmarket.com)

As a "secret foodie city" (*Forbes Travel Guide*), Columbus offers amazing eats at every turn. Have some time to explore? Take a tour with **Columbus Food Adventures**.

## 4. Sports enthusiast

Arrange a 90-minute guided tour of Ohio Stadium through Athletics. For information, visit [ohiostatebuckeyes.com/stadium-tours](http://ohiostatebuckeyes.com/stadium-tours). Note that tours must be scheduled two weeks in advance.



**Ohio Stadium**, completed in 1922, was the first horseshoe-shaped doubled-deck stadium in the United States. Home to Buckeye football, the stadium attracts over 105,000 enthusiastic fans on fall Saturdays.



**The Recreation and Physical Activity Center (RPAC)** is one of five recreational sports facilities on campus. Centrally located, RPAC is one of the largest collegiate recreation centers in the country, boasting more than half-a-million square feet of recreation, fitness and aquatic space, as well as meeting rooms and cafes. Stop by the RPAC Welcome Center for a free pass to explore the facility. [recsports.osu.edu](http://recsports.osu.edu)

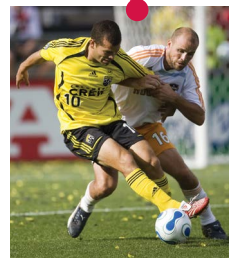
**The Columbus Clippers**, a minor league affiliate of the Cleveland Indians, make their home at Huntington Park, a 10,100-seat stadium located in the Arena District just a few miles south of campus. [clippersbaseball.com](http://clippersbaseball.com)

Ohio State students have access to discount tickets for all three sports programs — and many other city events — through **D-Tix**.



**The Arena District** plays host to the NHL's Columbus Blue Jackets. Catch a game if you're in town during hockey season (September through April). [bluejackets.nhl.com](http://bluejackets.nhl.com)

**Bask in Buckeye pride** by attending an Ohio State sporting event. With more than 30 varsity sports, you're likely to find a game scheduled during your visit. [ohiostatebuckeyes.com](http://ohiostatebuckeyes.com)



**Glory to Columbus!** 2020 MLS Cup Champions the Columbus Crew play at their new downtown stadium — Lower.com Field — from February through October. [columbuscrew.com](http://columbuscrew.com)

# Visit tips

---

## Before you leave home ...

- **Please read your confirmation email carefully and bring it with you.** It contains important information, including the location of your first session.
- If you have an academic appointment prior to your overview and campus tour, please **report there first**.
- **Download the Ohio State app** for easy access to the campus map and bus schedule.
- **Allow an additional 30 minutes** for unexpected delays on your way to campus. Before you leave home, you may want to visit [ohgo.com](http://ohgo.com) for the latest construction and traffic information.
- In preparation for your visit, **write down questions** you would like to ask our counselors or students.
- **The Admissions Overview and Campus Tour is a 90-minute walking tour.** Please dress for the weather. Wear comfortable shoes, bring a water bottle and — if rain is expected — pack an umbrella.
- If you're planning an **overnight stay**, see a list of accommodations at [visit.osu.edu](http://visit.osu.edu).

---

## Have a great visit at The Ohio State University!

If you have questions about your visit or need to reschedule, call 614- 292-3980 or visit [campusvisit.osu.edu](http://campusvisit.osu.edu).

## While you're here ...

**Plan to see as much as you can** on and around campus before or after your tour. Visit staff will be on hand to answer your questions and direct you to visitor favorites like the university bookstore and [Wexner Center for the Arts](#).

### Don't miss an opportunity to:

**Stop by Barnes & Noble at The Ohio State University** for all your Buckeye merchandise. Two locations are particularly convenient: on the first floor of the [Ohio Union](#) (near the High Street entrance) and on the corner of High Street and 11th Avenue in the Gateway.

**Take your picture with the bronze Brutus Buckeye** sitting on the bench inside the main entrance of the [Ohio Union](#). Picture yourself as a Buckeye!

**Grab a bite to eat at one of our on-campus dining facilities.** Scroll up to Foodies for great suggestions for a meal on or around campus. Or, check with our visit staff for recommendations.

**Attend an event on campus.** Catch a lecture, play, concert, exhibit or festival — something is always happening on campus! Nonstudents are welcome. For a full listing, check out the calendar of events at [osu.edu/events](http://osu.edu/events).

**Relax on the Oval**, the open grassy area stretching from [Thompson Library](#) to College Road. The Oval is the place to be for people-watching, frisbee and hanging out when the weather is warm.